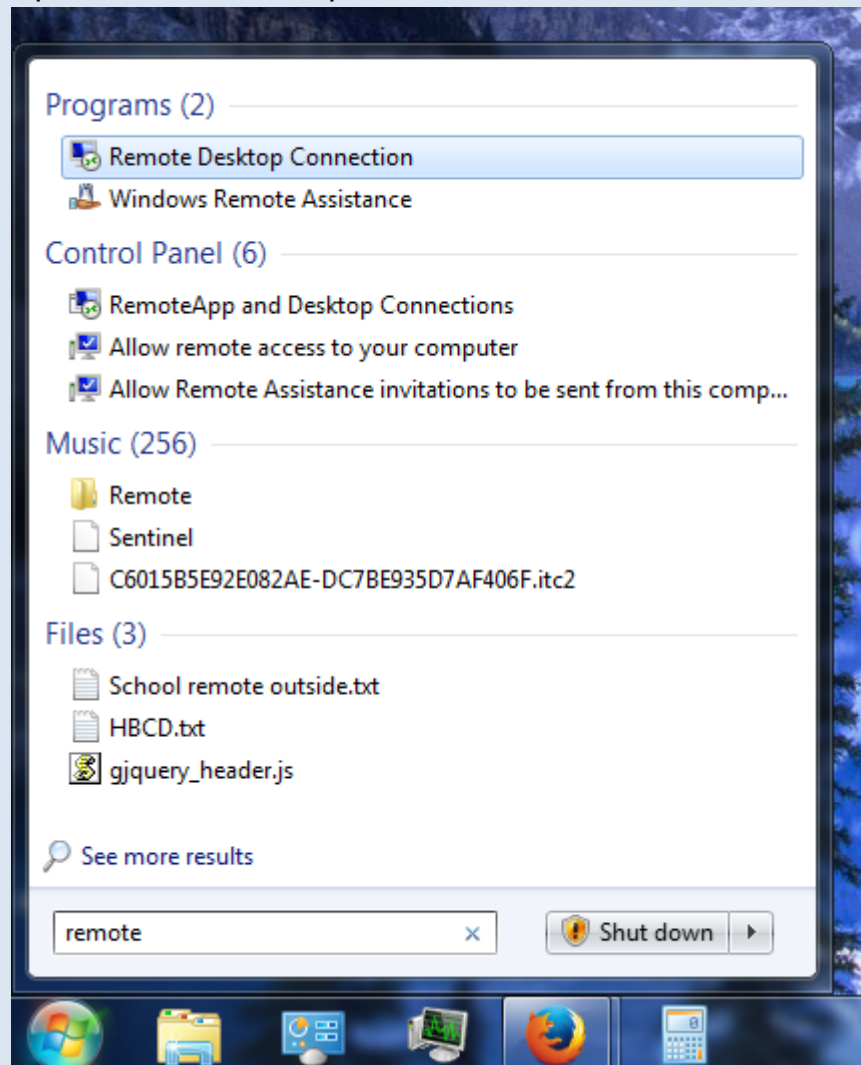


# How to Connect to Remote Desktop Outside of the School Building

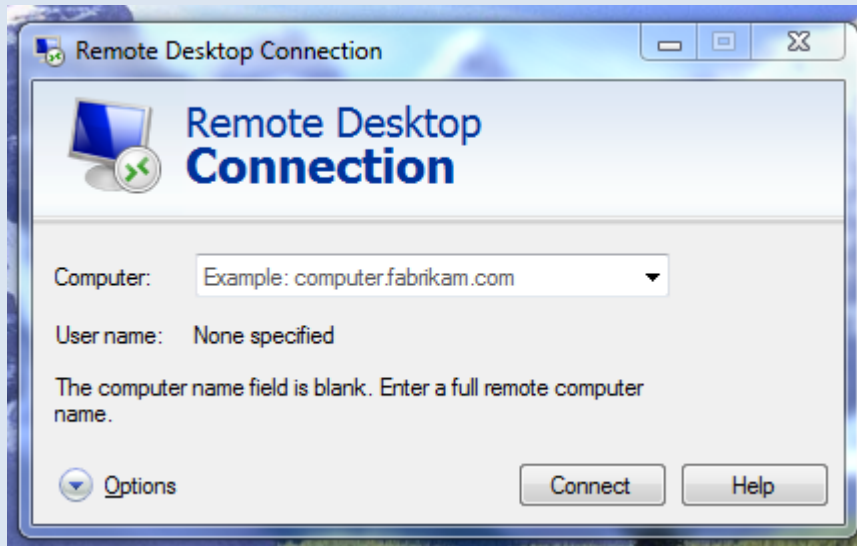
## Step 1: Open up Remote Desktop

To do this click on the Windows icon in the bottom left corner of your screen and type in "remote".

Open "Remote Desktop Connection"



The following Window should open:



**Step 2:** Type in the following number: "165.234.186.203"

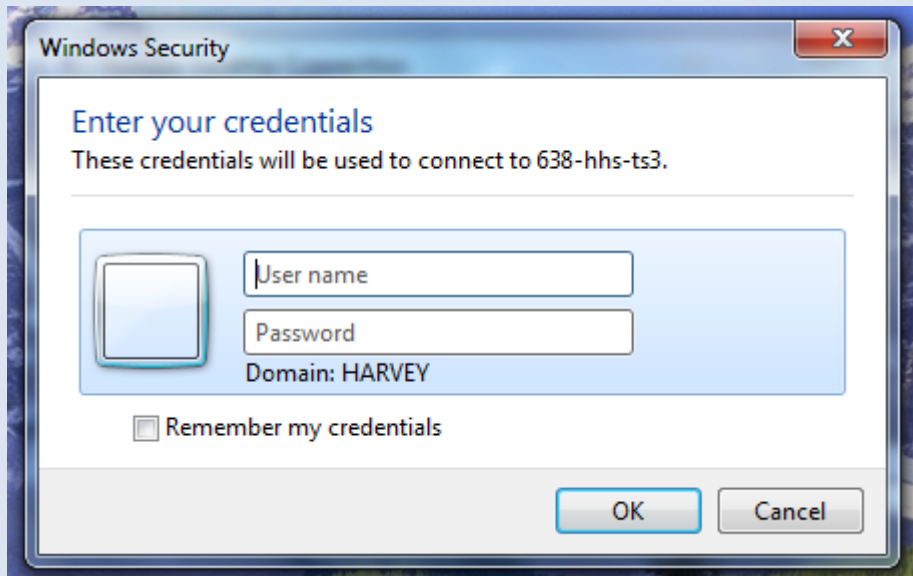
It should look something like this:



**Step 3:** Click on the connect button

This window should pop up.

Note: The Domain will be different unless you have logged in previously.



**Step 4:** Enter in your credentials

Note: "HARVEY" *must* be put before your username or it will not work!



**Step 5:** Click "OK" and you should connect to the school TS3 server